

## Dust Dispersion Inhibitor

# Dust Shut Series

Dust Shut is a dust dispersion inhibitor which can be used with a variety of dispersible powders. At construction sites and waste disposal sites, etc., wind causes dispersion of dust which has a negative impact on the surrounding environment. Dust Shut is a dust dispersion inhibitor which resolves such problem.



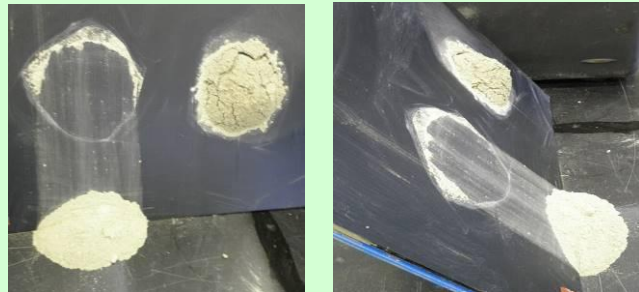
At such as construction sites, wind causes dispersion of dust which has a negative impact on the surrounding environment



Upon adding Dust Shut, a film forms on the surface of the sand and prevents dispersion of the sand



After adding Dust Shut  
Sand does not collapse even when water is added



[(Left) Dust Shut not added / (Right) Dust Shut added]  
When the sand is tilted, the sand to which Dust Shut has been added does not collapse.

## Applications

Application	Subjects of use
Suppressing dust and preventing dispersion	Construction sites, Building disassembly sites (asbestos, etc.), Quarries and mines (field sediments), waste disposal sites (incineration ashes), Thermal power plants and steel plants (with coal and ash), Unpaved roads, Sports fields and parks, Radiation-contaminated soil
Soil surface protection	Embankments, earth fill, and cut earth
Covering (films)	As a substitute for cover soil at sites subject to problems with stench, wildlife, and pests

## Features

### - Simplifies workability

Dust Shut: Due to being a highly permeable low viscosity product, it is easier to handle than coating-type products, does not require special equipment, and can be sprayed using a regular household watering can or sprayer, etc.

Dust Shut 15: Due to being a product that has cleared the standard of not freezing at a temperature of  $-15^{\circ}\text{C}$ , it can be used in cold areas. When actually using the product upon

diluting it with water, use immediately after dilution, give it fluidity by stirring it with a mixer, or use in a temperature retained environment by such as placing a cover over the dilution tank.



Dust Shut (left) and Dust Shut 15 (right) at  $-15^{\circ}\text{C}$

### - Prevents dust

As Dust Shut dries after being sprayed, it bonds the particles of the soil, etc. and prevents the dispersion of dust.

### - Functional and economic

Dust Shut can be diluted with water to change its concentration for use with various dispersible powders.

It is also possible to reduce costs by using Dust Shut with a low concentration.

### - Highly safe

Dust Shut uses highly safe materials and is an environmentally compatible product that has no harmful effects on humans or the environment.

## Method of Use

### - Reference of spraying concentration

Period of dispersion preventing effects	Dilution factor	Spray volume of diluted solution
1 month	1:10	1 kg/m <sup>2</sup>
3 months	1:5	2 kg/m <sup>2</sup>

### - Reference of dispersion preventing area (per can)

Packaging	1:10 dilution (application of 1 kg/m <sup>2</sup> )	1:5 dilution (application of 2 kg/m <sup>2</sup> )
18 kg can	180 m <sup>2</sup>	45 m <sup>2</sup>

As Dust Shut will exhibit sufficient effects even with a low concentration, dilute the stock solution by 5 to 20 times and spray onto the dispersible powder.

\* The dilution factors and spray volumes are only provided as a guide. Use outside of the above is possible depending on the site of application and the period to prevent dispersion.

## Properties

	Dust Shut	Dust Shut 15
Main components	Thermoplastics resin	Thermoplastics resin, Antifreeze
Appearance	Milky white liquid	Milky white liquid
pH	6.0 – 7.0	6.0 – 7.0
Packaging	18 kg can	18 kg can

### Technica Goudou Co., Ltd.

(Head Office)  
 12<sup>th</sup> Floor, Higashi Kobe Center Bldg.  
 8-6-26 Motoyama-Minamimachi, Higashi Nada-ku, Kobe, Hyogo 658-0015  
 Phone: 81-78-436-0280 / Fax: 81-78-451-0257  
 (Tokyo Sales Office)  
 1<sup>st</sup> Floor, Ikebukuro FN Bldg.  
 3-9-10 Higashi Ikebukuro, Toshima-ku, Tokyo 170-0013  
 Phone: 81-3-6907-2566 / Fax: 81-3-3985-8611  
 (Sendai Sales Office)  
 9<sup>th</sup> Floor, Izumi Chuo Bldg.  
 1-16-6 Izumi Chuo, Izumi-ku, Sendai, Miyagi 981-3133  
 Phone: 81-22-375-3981 / Fax: 81-22-375-3983  
 (Kobe Laboratory)  
 Complex D, Room 405  
 1-2-25 Wadayamadori, Hyogo-ku, Kobe, Hyogo 652-0884  
 Phone/Fax: 81-78-671-1190